

求積表

地番	1 ①				
NO	Xn	Yn	Yn+1-Yn-1	Xn · (Yn+1-Yn-1)	
901	43371.408	-75303.241	13.965	605681.712720	
P-1	43357.159	-75300.633	-20.197	-875684.540323	
P-2	43353.013	-75323.438	-25.243	-1094360.107159	
1941	43367.287	-75325.876	-0.027	-1170.916749	
902	43367.695	-75323.465	11.278	489100.864210	
P32	43369.323	-75314.598	20.224	877101.188352	
合計				668.201051	
合計面積				334.1005255	
地積				334.10 m ²	

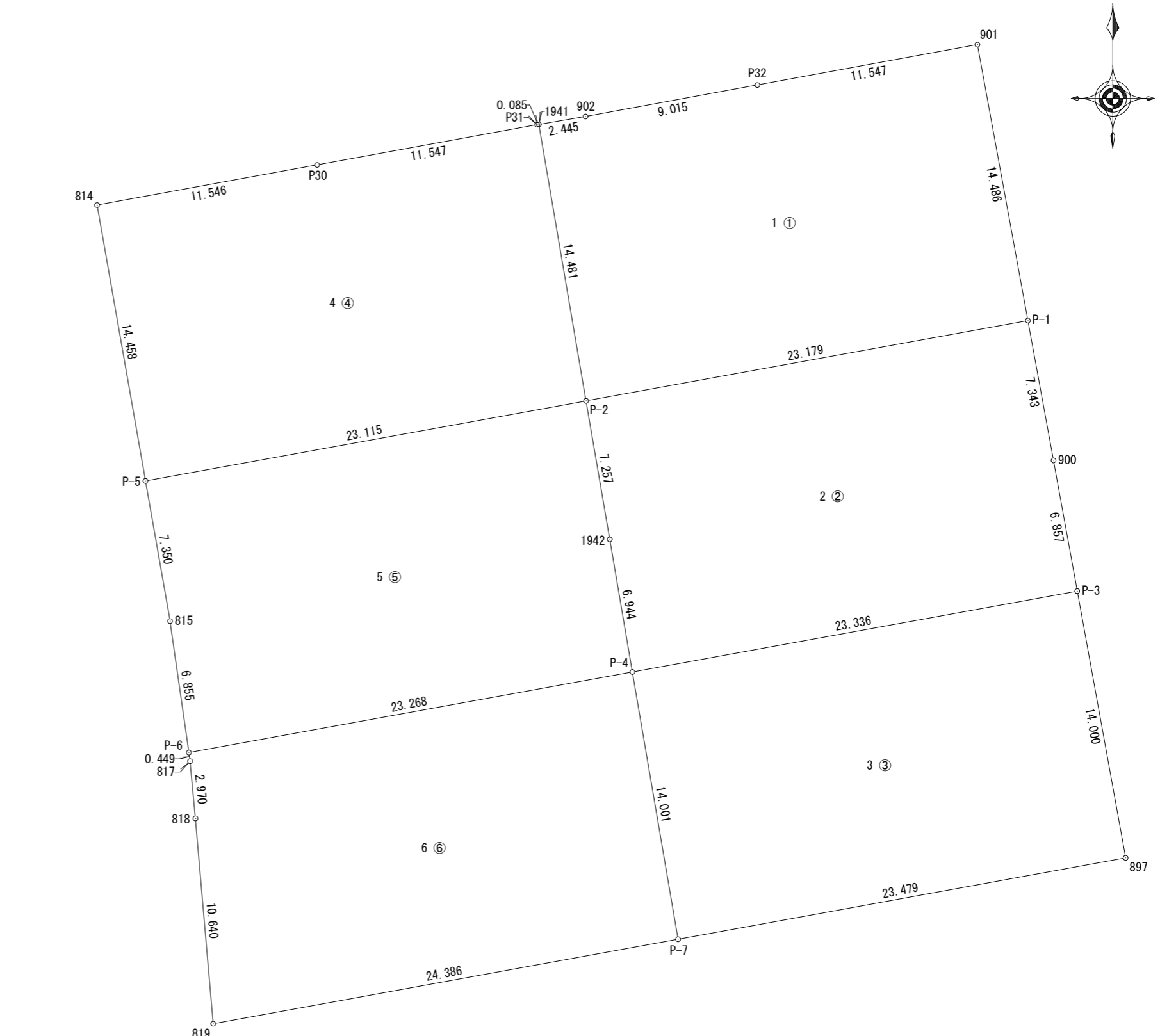
地番	2 ②				
NO	Xn	Yn	Yn+1-Yn-1	Xn · (Yn+1-Yn-1)	
P-1	43357.159	-75300.633	24.127	1046078.175193	
900	43349.936	-75299.311	2.546	110368.937056	
P-3	43343.189	-75298.087	-21.736	-942107.556104	
P-4	43339.015	-75321.047	-24.129	-1045727.092935	
1942	43345.860	-75322.216	-2.391	-103639.951260	
P-2	43353.013	-75323.438	21.583	935688.079579	
合計				660.591529	
合計面積				330.2957645	
地積				330.29 m ²	

地番	3 ③				
NO	Xn	Yn	Yn+1-Yn-1	Xn · (Yn+1-Yn-1)	
P-3	43343.189	-75298.087	25.458	1103430.905562	
897	43329.414	-75295.589	-20.602	-892672.587228	
P-7	43325.214	-75318.689	-25.458	-1102973.298012	
P-4	43339.015	-75321.047	20.602	892870.387030	
合計				655.407352	
合計面積				327.7036760	
地積				327.70 m ²	

地番	4 ④				
NO	Xn	Yn	Yn+1-Yn-1	Xn · (Yn+1-Yn-1)	
P-5	43348.878	-75346.180	-25.239	-1094082.331842	
814	43363.119	-75348.677	8.861	384240.597459	
P30	43365.195	-75337.319	22.717	985127.134815	
P31	43367.272	-75325.960	11.443	496251.693496	
1941	43367.287	-75325.876	2.522	109372.297814	
P-2	43353.013	-75323.438	-20.304	-880239.575952	
合計				669.815790	
合計面積				334.9078950	
地積				334.90 m ²	

地番	5 ⑤				
NO	Xn	Yn	Yn+1-Yn-1	Xn · (Yn+1-Yn-1)	
P-6	43334.853	-75343.940	-23.863	-1034099.597139	
815	43341.639	-75344.910	-2.240	-97085.271360	
P-5	43348.878	-75346.180	21.472	930787.108416	
P-2	43353.013	-75323.438	23.964	1038911.603532	
1942	43345.860	-75322.216	2.391	103639.951260	
P-4	43339.015	-75321.047	-21.724	-941496.761860	
合計				657.032849	
合計面積				328.5164245	
地積				328.51 m ²	

地番	6 ⑥				
NO	Xn	Yn	Yn+1-Yn-1	Xn · (Yn+1-Yn-1)	
819	43320.852	-75342.682	-24.910	-1079122.423320	
818	43331.452	-75343.599	-1.194	-51737.753688	
817	43334.409	-75343.876	-0.341	-14777.033469	
P-6	43334.853	-75343.940	22.829	989291.359137	
P-4	43339.015	-75321.047	25.251	1094353.467765	
P-7	43325.214	-75318.689	-21.635	-937341.004890	
合計				666.611535	
合計面積				333.3057675	
地積				333.30 m ²	



総合計面積	1988.8300530 m ²
-------	-----------------------------

求積図	
所在	高崎市中里町字毘沙門31番1外
縮尺	1/250
作成日	令和8年4月28日
作成者	土地家屋調査士 須長 亮