

求積表

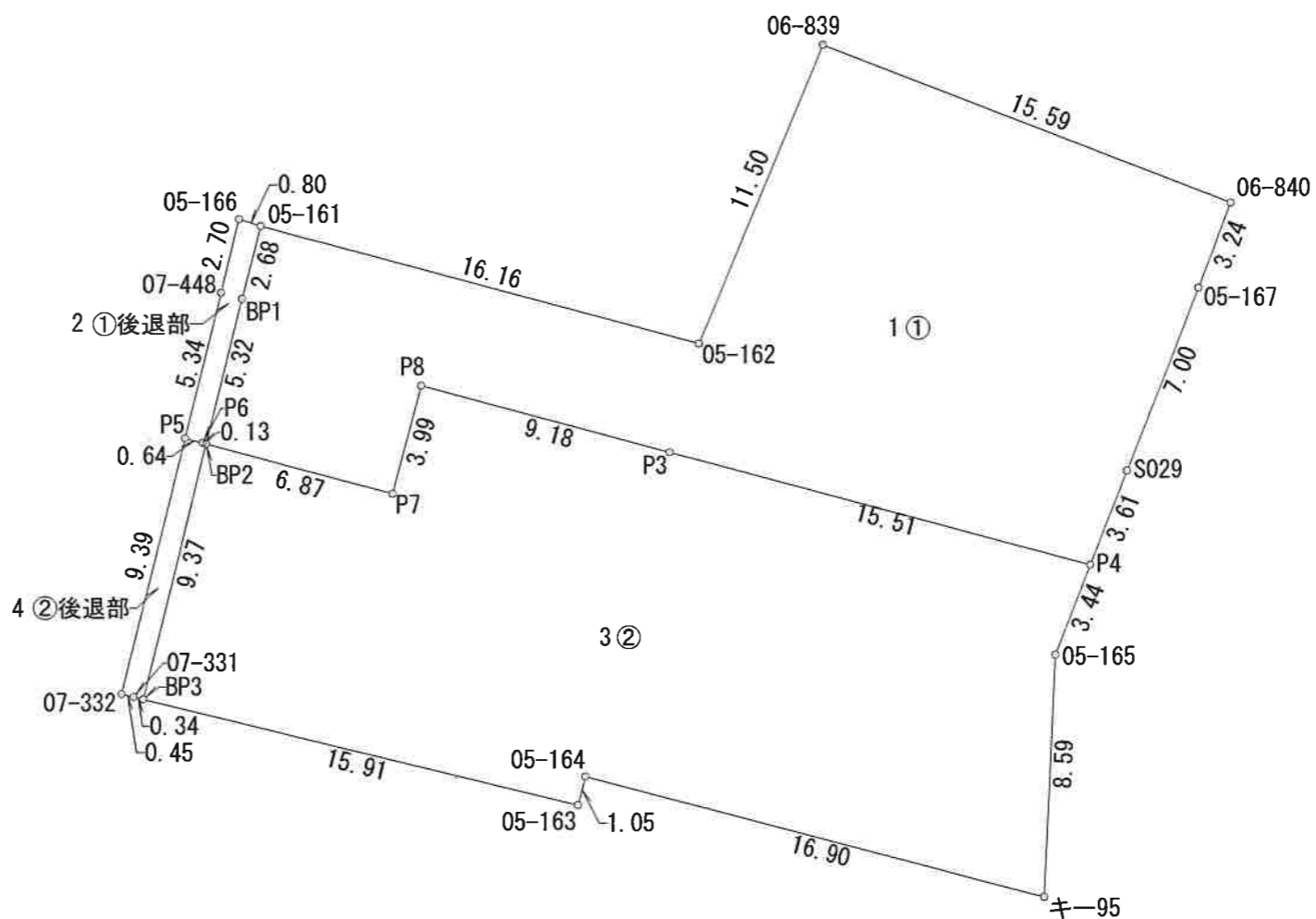
地番	1 ①			
NO	Xn	Yn	Yn+1-Yn-1	Xn · (Yn+1-Yn-1)
05-161	35151.442	-69705.700	-16.266	-571773.355572
BP1	35148.849	-69706.368	-1.964	-69032.339436
BP2	35143.686	-69707.664	5.335	187491.564810
P7	35141.893	-69701.033	7.672	269608.603096
P8	35145.745	-69699.992	9.903	348048.312735
P3	35143.349	-69691.130	23.831	837501.150019
P4	35139.302	-69676.161	16.291	572454.368882
S029	35142.658	-69674.839	3.887	136599.511646
05-167	35149.171	-69672.274	3.727	131000.960317
06-840	35152.196	-69671.112	-13.370	-469984.860520
06-839	35157.831	-69685.644	-18.990	-667647.210690
05-162	35147.225	-69690.102	-20.056	-704912.744600
		合計		-646.039313
		合計面積		323.0196565
		地積		323.01 m ²

地番	2 ①後退部			
NO	Xn	Yn	Yn+1-Yn-1	Xn · (Yn+1-Yn-1)
05-161	35151.442	-69705.700	-0.096	-3374.538432
05-166	35151.687	-69706.464	-1.417	-49809.940479
07-448	35149.067	-69707.117	-1.944	-68329.786248
P5	35143.887	-69708.408	-0.673	-23651.835951
P6	35143.720	-69707.790	0.744	26146.927680
BP2	35143.686	-69707.664	1.422	49974.321492
BP1	35148.849	-69706.368	1.964	69032.339436
		合計		-12.512502
		合計面積		6.2562510
		地積		6.25 m ²

地番	3 ②			
NO	Xn	Yn	Yn+1-Yn-1	Xn · (Yn+1-Yn-1)
BP2	35143.686	-69707.664	-8.875	-311900.213250
BP3	35134.585	-69709.908	13.216	464338.675360
05-163	35130.807	-69694.448	15.723	552361.678461
05-164	35131.819	-69694.185	16.606	583398.986314
キ-95	35127.526	-69677.842	16.765	588912.973390
05-165	35136.106	-69677.420	1.681	59063.794186
P4	35139.302	-69676.161	-13.710	-481759.830420
P3	35143.349	-69691.130	-23.831	-837501.150019
P8	35145.745	-69699.992	-9.903	-348048.312735
P7	35141.893	-69701.033	-7.672	-269608.603096
		合計		-742.001809
		合計面積		371.0009045
		地積		371.00 m ²

地番	4 ②後退部			
NO	Xn	Yn	Yn+1-Yn-1	Xn · (Yn+1-Yn-1)
P5	35143.887	-69708.408	-2.888	-101495.545656
07-332	35134.773	-69710.678	-1.833	-64402.038909
07-331	35134.666	-69710.241	0.770	27053.692820
BP3	35134.585	-69709.908	2.577	90541.825545
BP2	35143.686	-69707.664	2.118	74434.326948
P6	35143.720	-69707.790	-0.744	-26146.927680
		合計		-14.666932
		合計面積		7.3334660
		地積		7.33 m ²

総合計面積	707.6102780 m ²
-------	----------------------------



求積図	
所在	高崎市柴崎町字蟹沢
縮尺	1/250
作成日	令和3年8月30日
作成者	土地家屋調査士 須長 亮